

NeVaTM VS

A DEFINITIVE SOLUTION

DESIGNED FOR POST ASAH VASOSPASM

DEVICE

NeVa VS 4.0 x 22

REFERENCE NO

VE-4022-F0RR

MAXIMAL DIAMETER

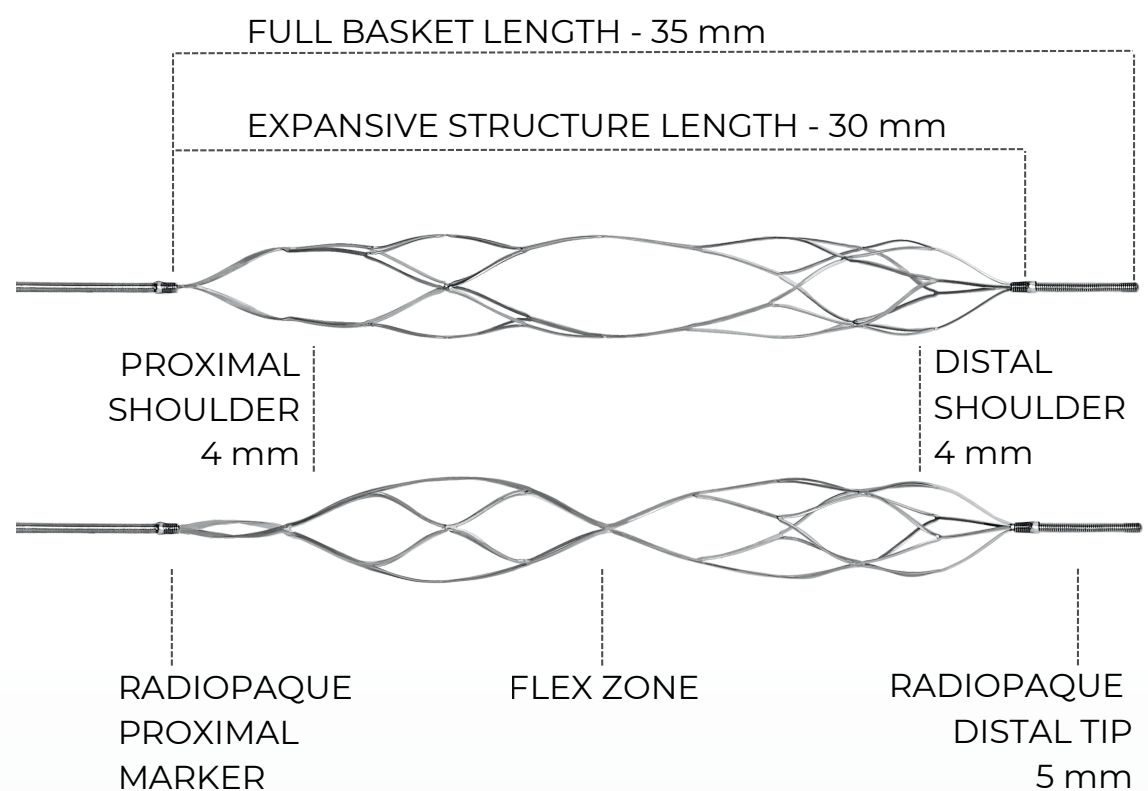
4 mm

MICROCATHETER (MC) ID

0.021"

RECOMMENDED IN VESSELS

with pre-spasm diameter of
2 - 4 mm



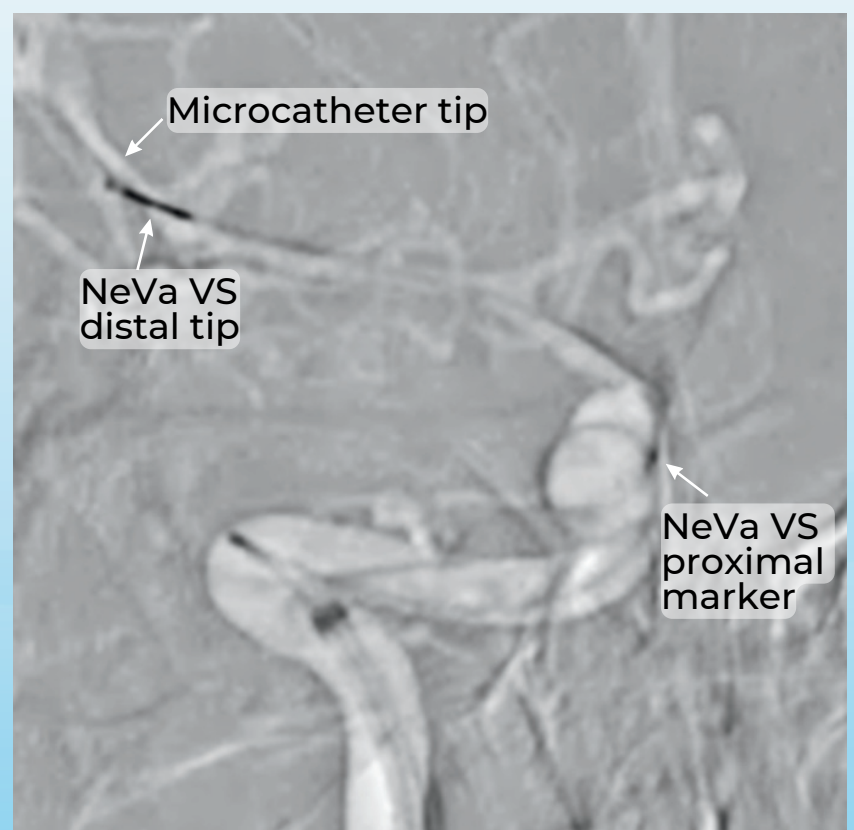
DEVICE PREPARATION & DEPLOYMENT

1. Inspect NeVa VS
2. Navigate MC distal to the treatable segment of the vasospastic vessel
3. Flush before loading into MC
4. Load into MC and navigate till the MC and NeVa VS tips align
5. Keep the introducer sheath!
6. Position NeVa VS centrally across the spasmic vessel
7. Deploy by unsheathing only
8. Leave in place for up to 10 minutes
9. Re-sheath to reposition or remove
10. Dip in saline when removed, inspect to ensure device integrity & absence of blood - Use new device if compromised
11. More than one device may be used during the procedure

DO NOT deploy/ re-sheath the same NeVa VS device more than 6 times

DO NOT drag through the vessel

DO NOT continue the procedure if excessive resistance is felt during delivery or retrieval



Frequent angio imaging is encouraged to evaluate device expansion and potential complications

The antiplatelet regimen is at the physician's discretion