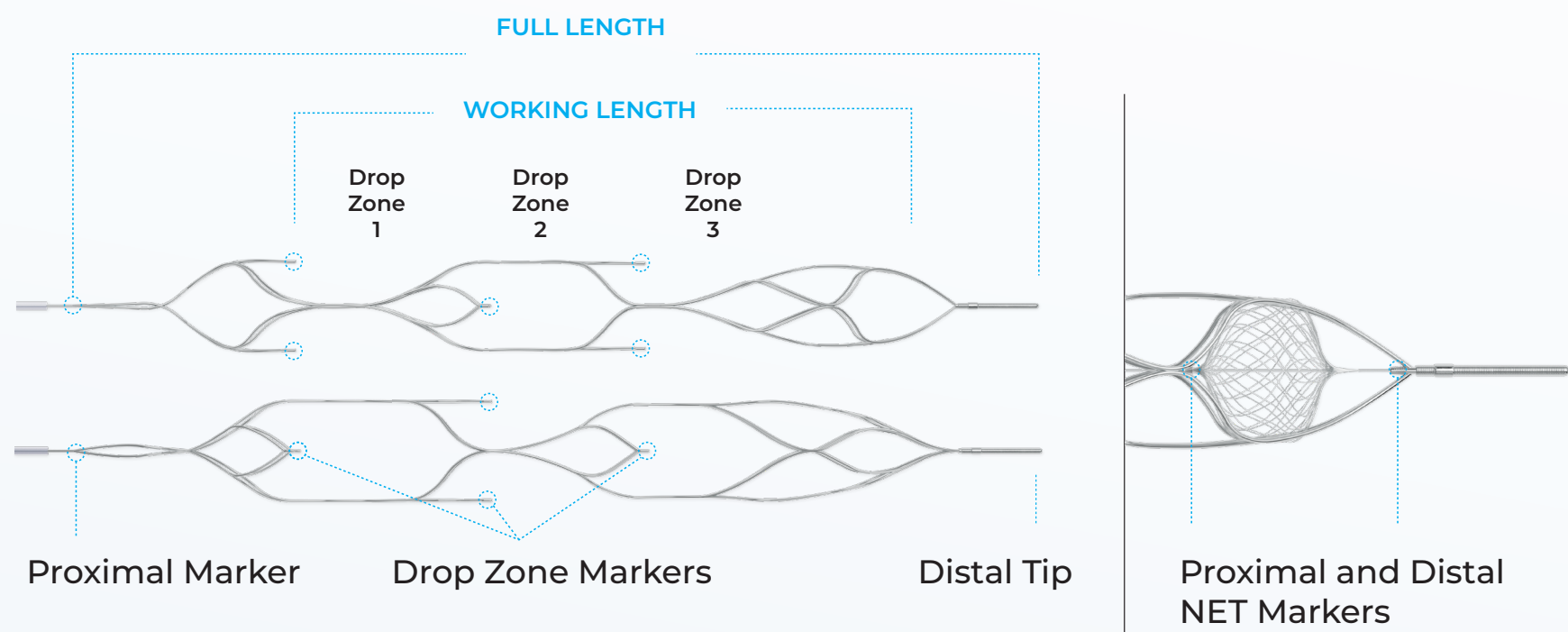




DESIGNED FOR
FIRST-PASS SUCCESS
WITH ALL CLOT TYPES

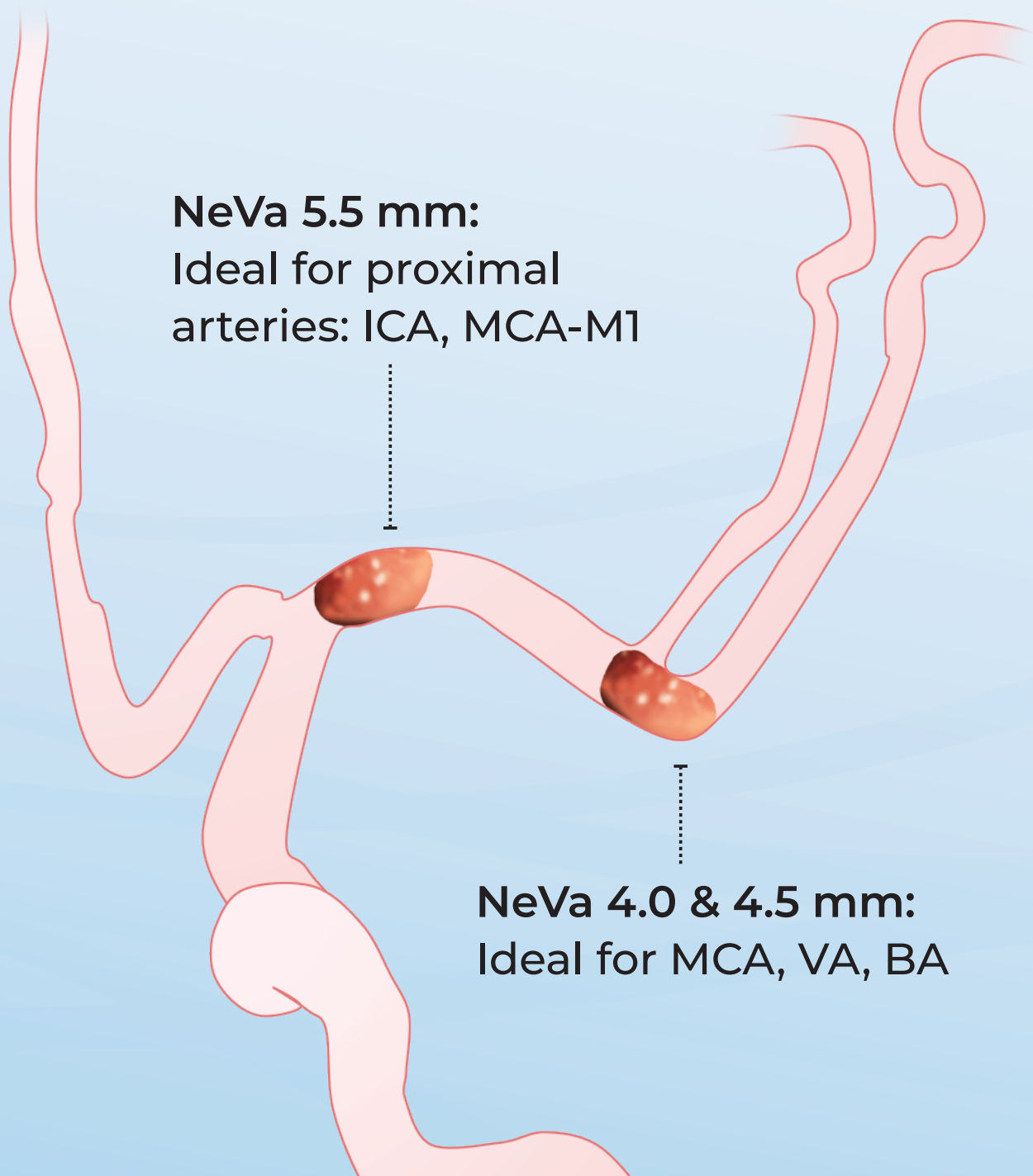
STRUCTURE



SIZING

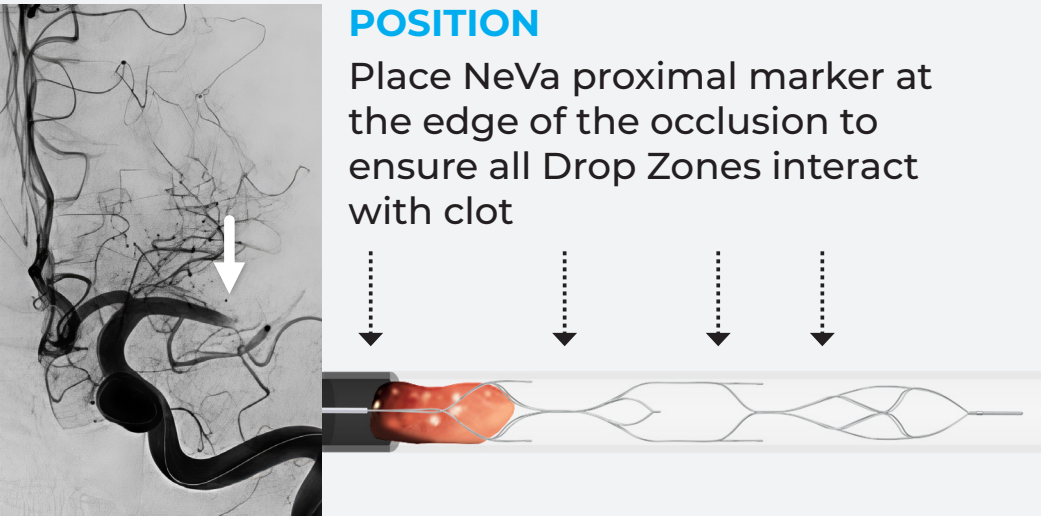
	Max Diameter (mm)	x	Working Length (mm)	Full Length (mm)	No. of Drop Zones	Minimal MC ID
NeVa	4.0	x	22	39	2	
NeVa NET	4.0	x	30	49	3	0.021"
NeVa	4.5	x	29	46	3	
NeVa	5.5	x	37	56	3	
NeVa NET	5.5	x	37	56	3	0.027"

The distal-most thrombus locations where different NeVa sizes may be suitable in the anterior circulation:



PREPARE & DELIVER

- Always flush NeVa before insertion
- Choose a microcatheter (MC) with good distal support
- Place the tip of the MC one “full length” of NeVa beyond the occlusion location: see sizing chart for reference
- Navigate NeVa to the lesion



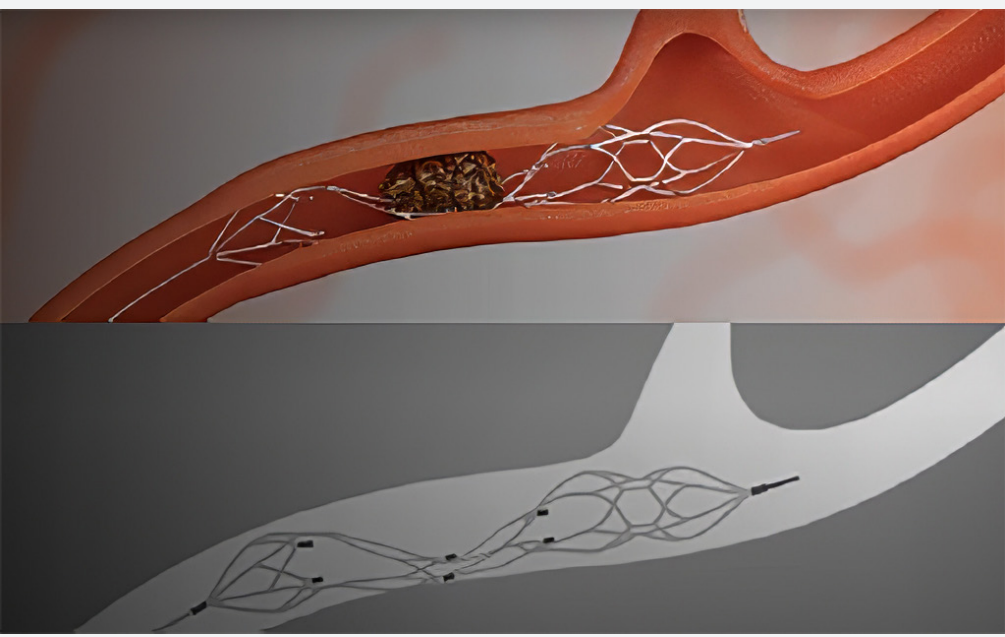
DEPLOY

- Release tension on the MC before unsheathing
- Deploy slowly to protect the ideal position: expect anchoring after 1 cm of unsheathing
- No need to wait—however, take time to verify positioning and confirm the placement of Drop Zone markers

RETRIEVE

- If using a BGC, deploy the balloon; start aspiration from proximal catheters
- Gently start pulling NeVa proximally
- Watch the Drop Zone markers

MARKERS COMPRESSED TOGETHER
you may be adjacent to a hard clot



MARKERS SPRING OPEN
you may now be at the proximal edge of the hard clot: THE DROP ZONE IS ON THE CLOT

