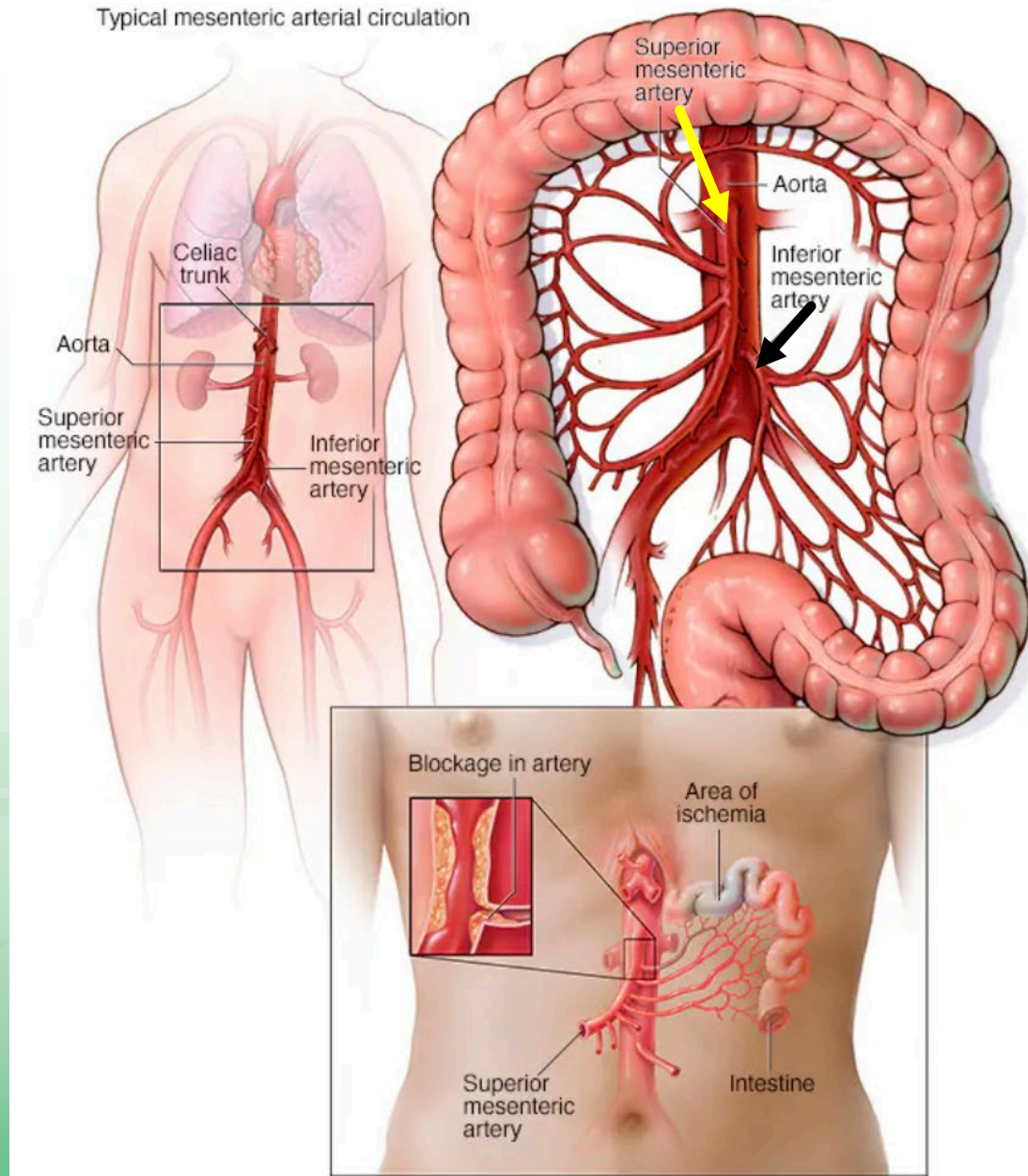
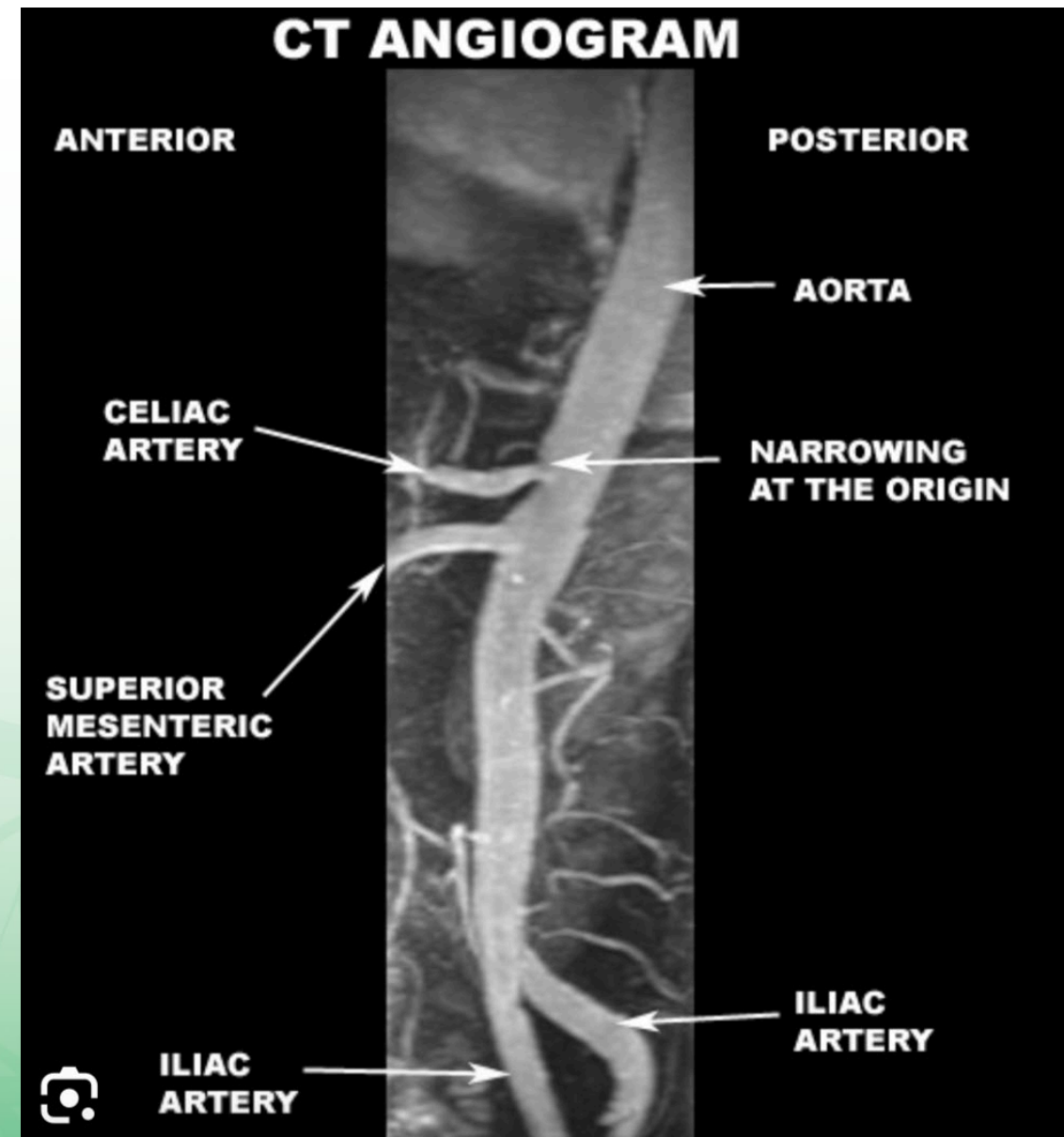
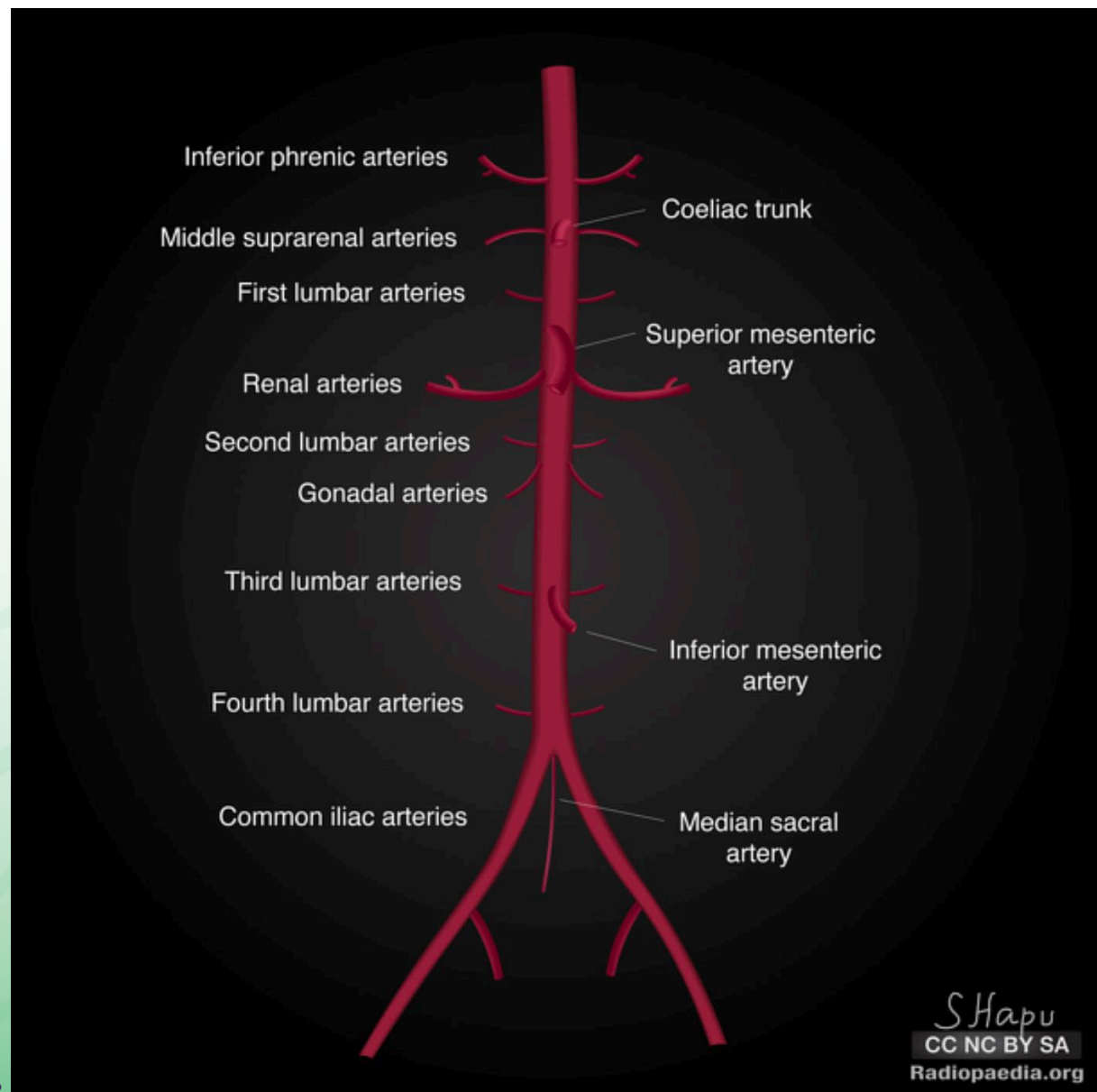


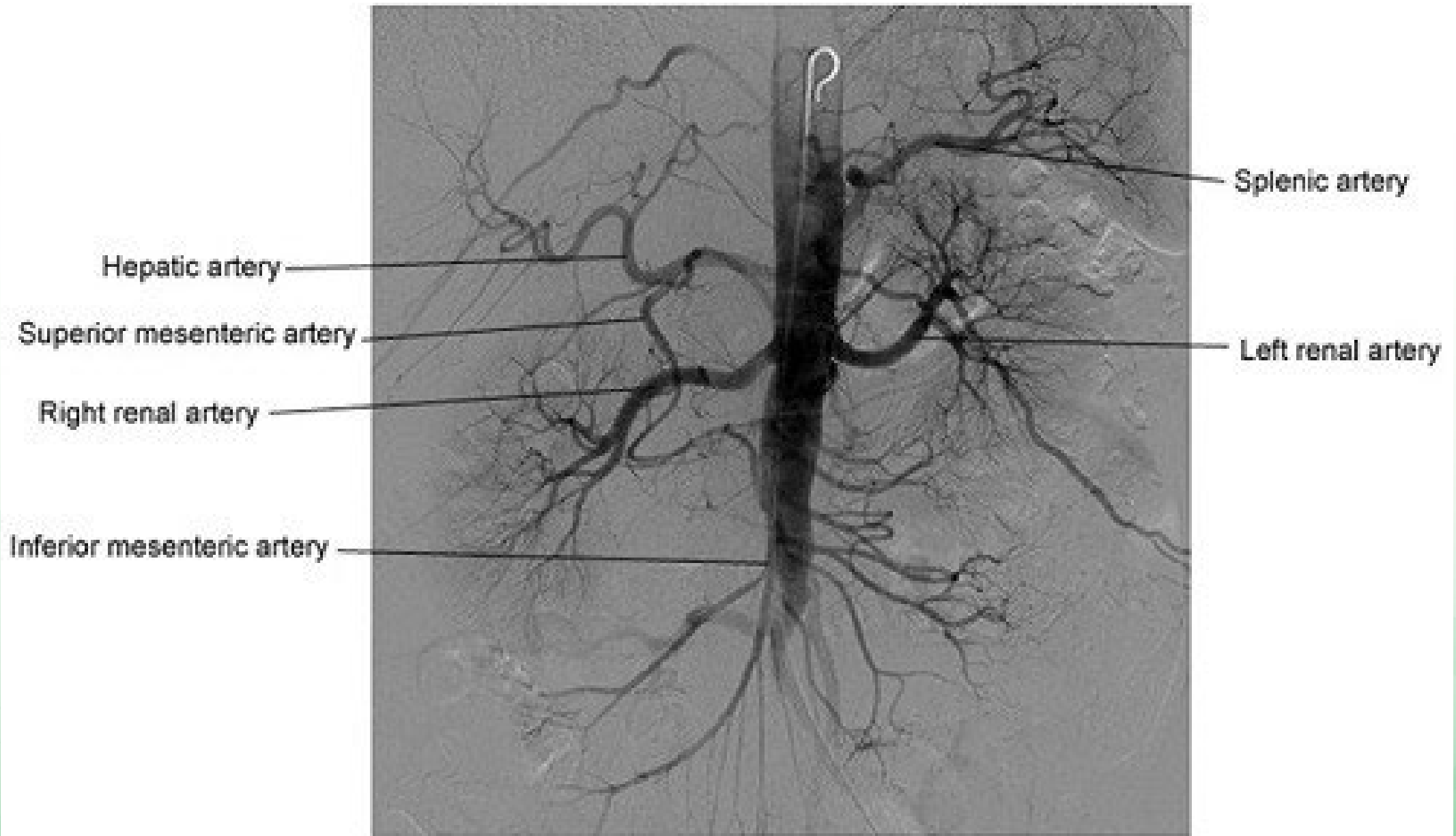
SMA ANATOMY

M E S E N T E R I C I S C H E M I A

- When narrowed or blocked arteries restrict blood flow to the small intestine
- Can cause permanent damage to the small intestine
- Acute mesenteric ischemia – caused by a blood clot and requires immediate treatment
- Chronic mesenteric ischemia – caused by a buildup of fatty deposits in the arteries
 - Treated with open surgery or angioplasty







The superior mesenteric artery and its branches.