

enVast™ PROCEDURE GUIDE

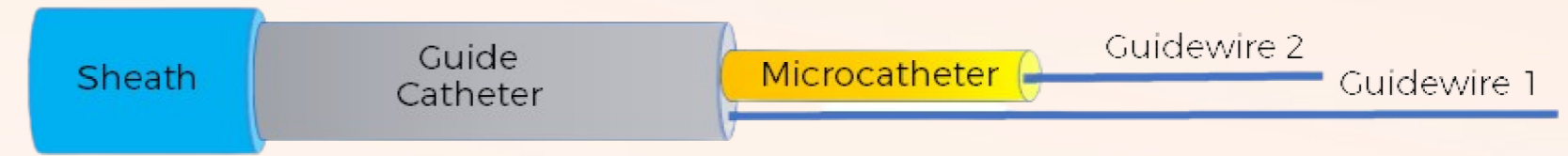
Ancillary Devices and Access Considerations

- Two .014" Workhorse wires
- One approved .021 or .027 Microcatheter
- Guide Catheter
- Guide Catheter Extension
- Three 60 ml VacLoc Syringes
- 3-way stop cocks

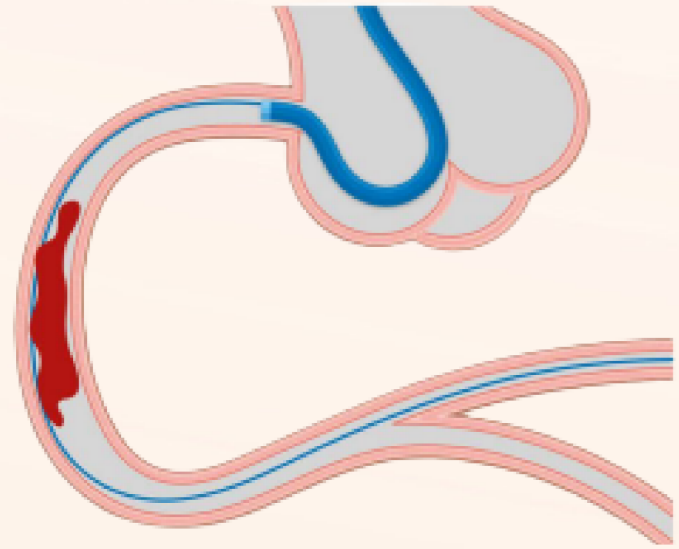
A Guide Catheter Extension is recommended if the clot is distal:



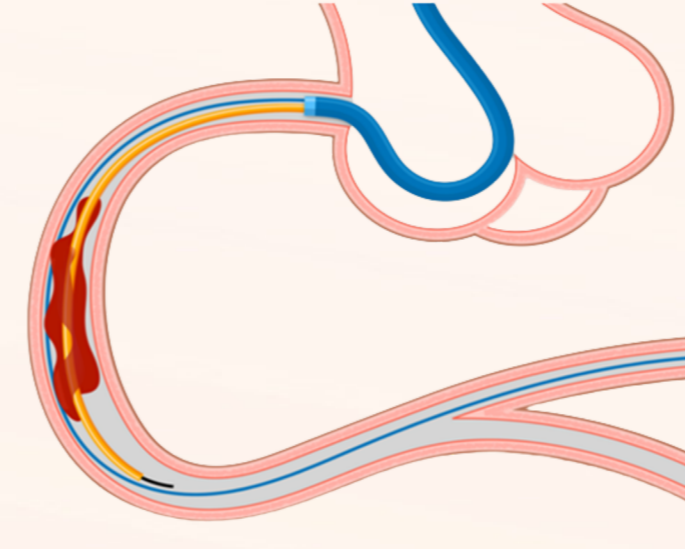
A Guide Catheter alone could be sufficient if the clot is proximal:



Guidewire & Microcatheter Placement

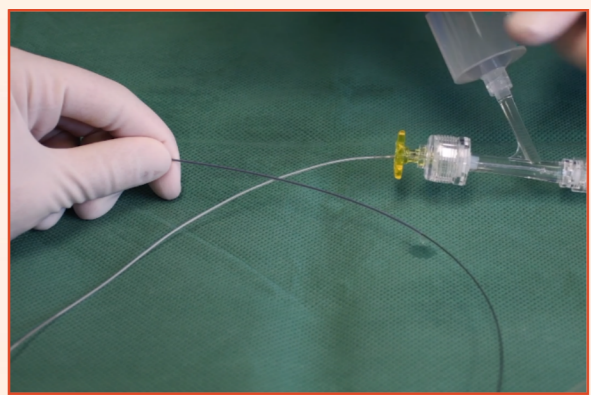


- Advance Guide Catheter and place into the coronary ostium
- Cross occlusion site with .014" wire (GW-1) and go as distal as possible
- Flush MC before use

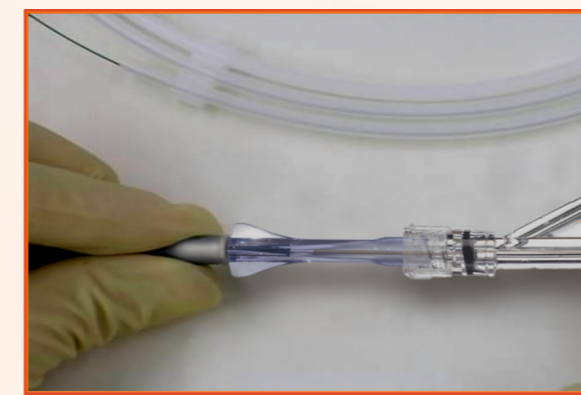


- Backload second .014" wire (GW-2) into the microcatheter (MC)
- Cross the lesion and place the distal marker of the MC beyond the occlusion site (one full length of the chosen enVast device)
- Remove GW-2 from MC

enVast Preparation - Flush, Load, Deliver



- Remove delivery wire and introducer sheath out of the packaging hoop and flush enVast
- Place the tip of the enVast introducer sheath into the RHV connected to the MC, so it is firmly seated in the MC hub



- Gently remove the introducer sheath by pulling it back and out - **KEEP THE SHEATH**
- Continue pushing the enVast pusher wire until the zebra markers enter the MC hub

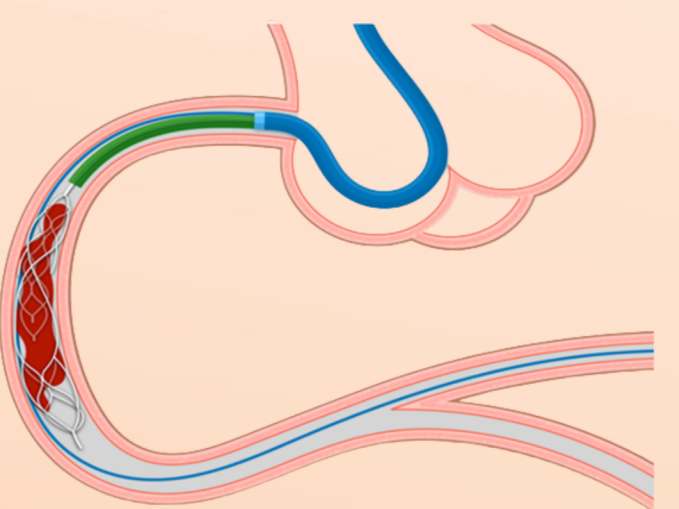


- Push enVast into the MC
- Continue pushing until the proximal section of the pusher wire enters entirely into the introducer sheath

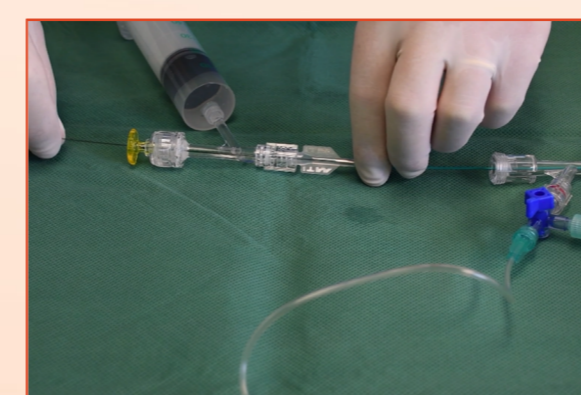
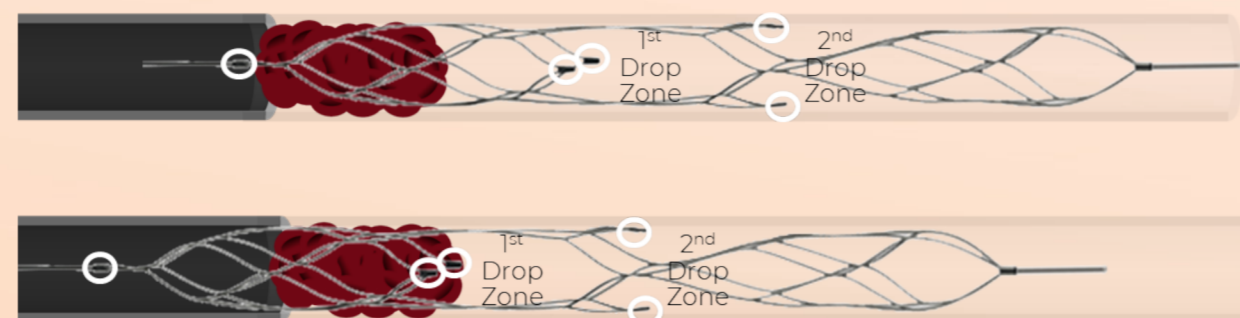


- Start fluoro
- Keep pushing until the enVast tip aligns with the MC tip marker

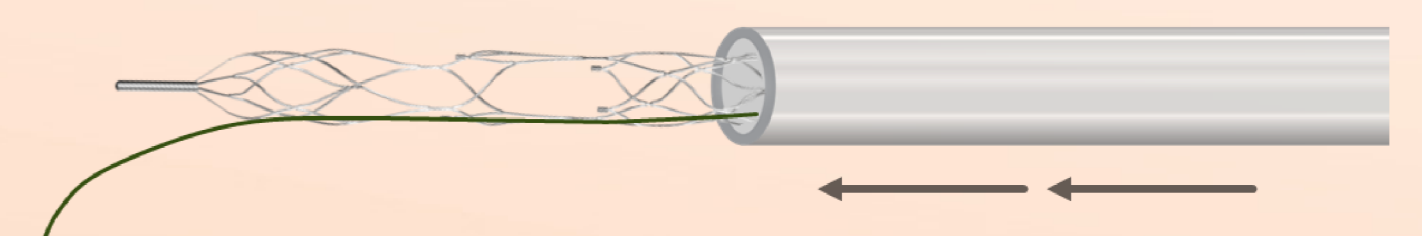
enVast Deployment



- Deploy enVast by fixing its pusher wire and carefully removing the MC proximally
- Check positioning



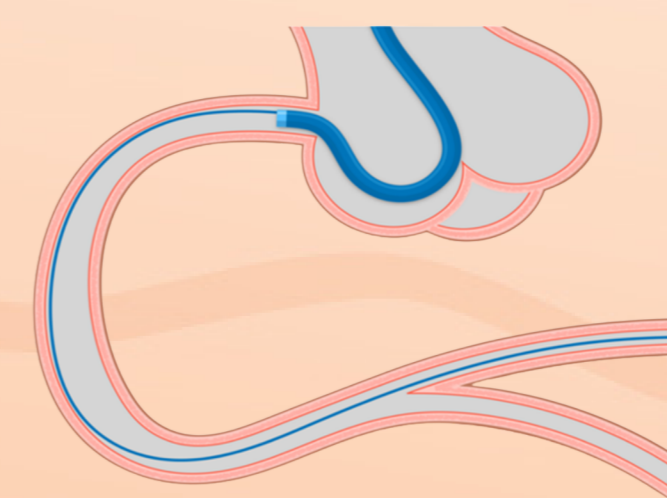
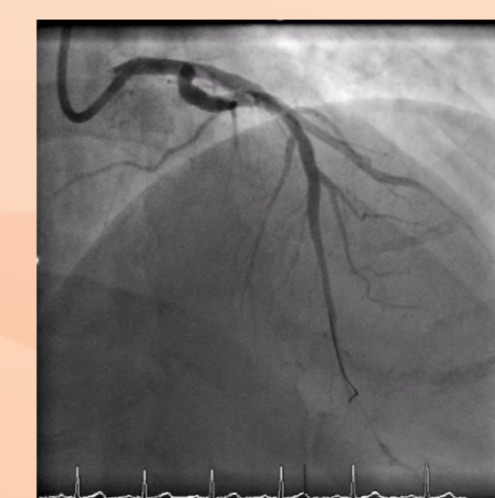
- Holding GW-1 and enVast pusher wire, remove the MC
- If using a Guide Catheter Extension, advance it over both enVast and GW-1



enVast Retrieval



- Start slow retrieval
- Withdraw enVast and GC-Extension simultaneously under continuous aspiration from the GC hub



- Aspirate the Guide Catheter thoroughly
- Perform fluoro run
- If needed, repeat up to three enVast passes

enVast thrombectomy device size guide

Product Name	Product Code	Maximal Diameter (mm)	Working Length (mm)	Full Length (mm)	No. of Drop Zones	Pusher Wire (cm)	Recommended Vessel Diameter (mm)	Min. MC ID	Compatible MCs
enVast 4.0 x 30	EV-4030-F2RR	4.0	30	39	2	180	≥ 2.0 & ≤ 3.5	.021"	• Rebar 18 – 0.021"
enVast 4.5 x 37	EV-4537-F2RR	4.5	37	57	2	180	≥ 2.0 & ≤ 4.5	.021"	• Trevopro – 0.021"
enVast 4.5 x 46	EV-4546-F3RR	4.5	46	66	3	180	≥ 2.0 & ≤ 4.5	.021"	• Headway – 0.021" or 0.027"
enVast 6.0 x 35	EV-6035-F2RR	6.0	35	55	2	180	≥ 3.5 & ≤ 6.0	.027"	• Via – 0.021" or 0.027"
									• Phenom – 0.021" or 0.027"
									• Velocity – 0.025"
									• Marksman – 0.027"

compatible MCs