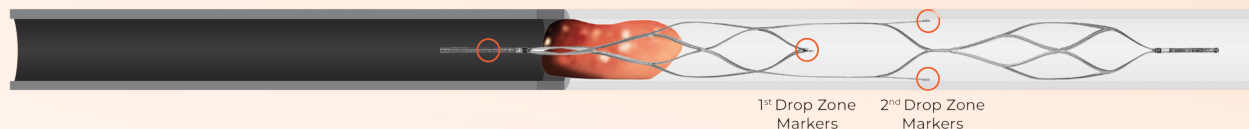


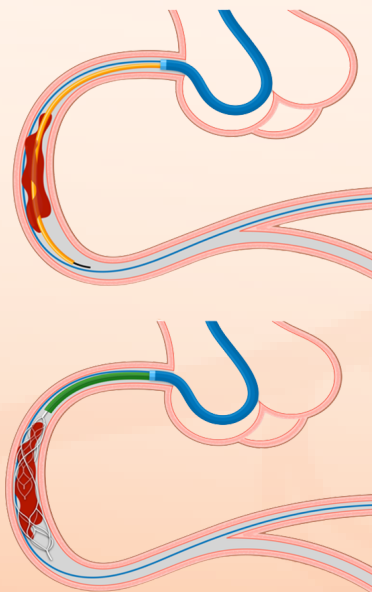
## POSITIONING

Position enVast with the proximal marker at the edge of the fluoroscopic occlusion location



## PROCEDURE STEPS

1. Cross occlusion site with .014" wire (GW-1) and go as distal as possible
2. Backload second .014" wire (GW-2) into microcatheter (MC)
3. Advance MC and GW-2 to position MC tip past thrombus
4. Remove GW-2 from MC
5. Prep enVast device (flush) and advance into MC, drive to distal tip of MC
6. Unsheath enVast and remove the MC

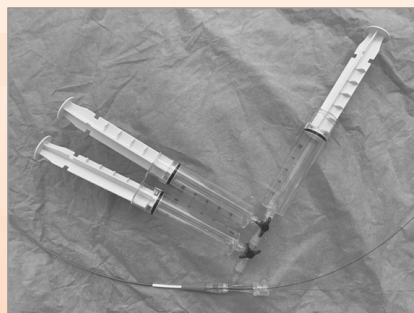


**Remember to keep the INTRODUCER SHEATH**

7. If using a Guide Catheter Extension, advance over both enVast and GW-1



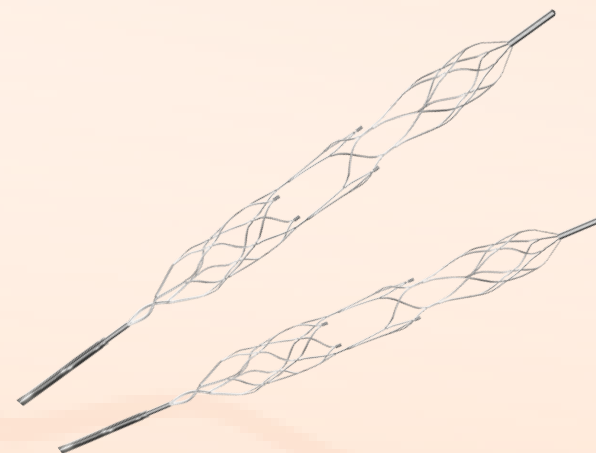
8. Check positioning and start slow retrieval
9. Withdraw enVast and GC-Extension simultaneously under continuous aspiration from the GC hub



10. Aspirate GC, perform fluoro run
11. If needed, repeat up to three enVast passes

enVast™

**CHOOSE  
TO REMOVE**



**STEMI  
Thrombectomy  
Procedure  
Guide**

## LIST OF PRODUCTS REQUIRED

- enVast
- 2 x .014" Workhorse wires
- Approved .021 or .027 Microcatheter
- Guide Catheter
- Guide Catheter Extension
- 3 x 60 ml VacLoc Syringe
- 3-way stop cocks

## MICROCATHETER CONSIDERATIONS

4.0 and 4.5 mm enVast sizes are compatible with MCs with .021" min ID

- Rebar 18 – 0.021"
- TrevoPro – 0.021"
- Headway – 0.021" or 0.027"
- Via – 0.021" or 0.027"
- Phenom – 0.021" or 0.027"
- Velocity – 0.025"
- Marksman – 0.027"

6.0 mm enVast size is compatible with MCs with .027" min ID

- Marksman – 0.027"
- Via – 0.027"
- Phenom – 0.027"

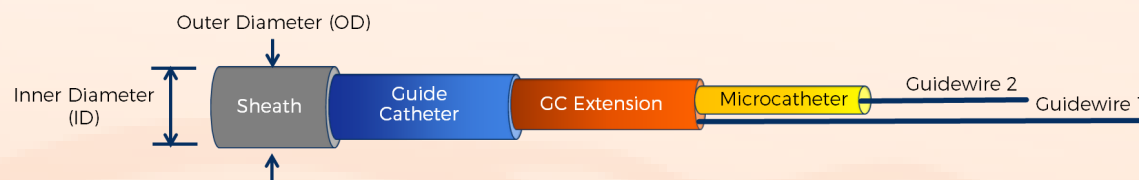
## ENVAST THROMBECTOMY DEVICE

Product Name	Product Code	Maximal Diameter (mm)	Working Length (mm)	Full Length (mm)	No. of Drop Zones	Pusher Wire (cm)	Recommended Vessel Diameter (mm)	Min. MC ID
enVast 4.0 x 30	EV-4030-F2RR	4.0	30	39	2	180	$\geq 2.0$ & $\leq 3.5$	.021"
enVast 4.5 x 37	EV-4537-F2RR	4.5	37	57	2	180	$\geq 2.0$ & $\leq 4.5$	.021"
enVast 4.5 x 46	EV-4546-F3RR	4.5	46	66	3	180	$\geq 2.0$ & $\leq 4.5$	.021"
enVast 6.0 x 35	EV-6035-F2RR	6.0	35	55	2	180	$\geq 3.5$ & $\leq 6.0$	.027"

## ACCESS CONSIDERATIONS

Depending on the location of the lesion, you may choose to use:

### a Guide Catheter + a Guide Catheter Extension: if clot is distal



The GC-Ext-OD must be small enough to fit into the GC-ID

The GC-Ext-ID must be large enough to accommodate the MC + GW2

Note that MC size will be bigger if you use the 6 mm enVast



### a Guide Catheter only: if clot is sufficiently proximal

