

## INITIAL EXPERIENCE WITH THE NOVEL 3 AND 5 DROP ZONE DESIGNS OF THE VESALIO NEVA THROMBECTOMY DEVICE

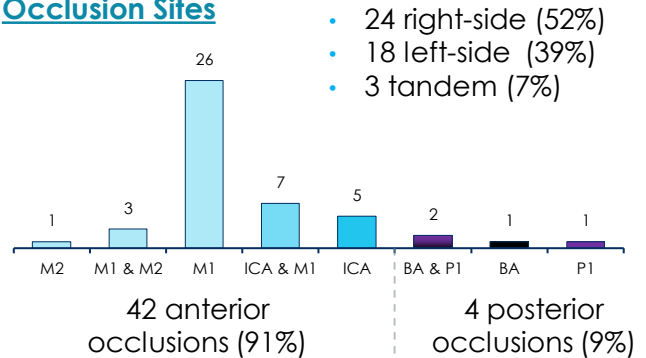
DR. AUDRIUS SIRVINSKAS, REPUBLIC HOSPITAL UNIVERSITY, VILNIUS, LITHUANIA

Single site experience: retrospective analysis of 46 patients with large vessel occlusion strokes treated with the NeVa™ device.

### Baseline Information – 46 Patients

Age:	Mean: 73.5 Range: 43 – 90 years
Gender:	48% Male, 52% Female
NIHSS at admission:	Mean: 16.7 Range: 11 – 26
IV t-PA administered in:	36 patients (78%)

### Occlusion Sites



### Recanalizations results of NeVa as “rescue” (n:6)

TICI 2B/3 was achieved in 5 out of 6 cases and mean # of passes for final recanalization was **1.2**

### Recanalizations results of NeVa in first-line use

#### 2 Drop Zone NeVa - 1st pass results (n:30)

TICI 2B/3	TICI 2C/3	TICI 3
20 / 30	19 / 30	13 / 30
<b>66%</b>	<b>63%</b>	<b>43%</b>

#### 2 Drop Zone NeVa – final results (n:30)

TICI 2B/3	TICI 2C/3	TICI 3
28 / 30	26 / 30	19 / 30
<b>93%</b>	<b>86%</b>	<b>63%</b>

- Mean # of passes for final recanalization: **1.5**

#### 3&5 Drop Zone NeVa - 1st pass results (n:10)

TICI 2B/3	TICI 2C/3	TICI 3
10 / 10	9 / 10	7 / 10
<b>100%</b>	<b>90%</b>	<b>70%</b>

### Clot Incorporation:

Of the 67 passes done with NeVa in these 46 cases: 9/10 times a NEVA pass came out with clot in the device

### Conclusions

1. NeVa works well both as a bail out and as a first-line device option
2. 40 first-line patients confirm the published / presented results:
  - High First Pass & Final Reperfusion Rates
  - High proportion of full or near-full reperfusion
  - Clot removal in 90% of passes
  - Low complication rates
  - Mortality in line with norms
3. 10 initial 3 & 5 Drop Zone cases promising even better performance

### Safety and Patient Outcomes

Mean NIHSS @ Discharge:	<b>3.4</b>
Range:	<b>0-18</b>
<i>data available for 41 patients</i>	
Improvement vs. mean pre-treatment NIHSS:	<b>13.3</b>
Mortality:	<b>5 patients (10.9%)</b>
Complications:	
1 stenosis due to old plaque, 1 vasospasm, 2 dissections	